

Knife Sterilizer

by ECONOLISER

PRODUCT DESCRIPTION

Econoliser sterilizers are designed to replace wasteful constant overflow hot water sterilizers. Fully automatic and simple operation – inserting a knife activates the sterilization cycle. Knife blades are sterilized with water at a temperature greater than 190 degrees F.

BENEFITS

Dramatically reduces water usage - as little as 3.5-oz of water per cycle and does not use water when not sterilizing. Knives and power tools do not require a potable water rinse before use.

Environmentally friendly - whether you use city or well-water, reducing water usage minimizes waste and helps preserve the environment.

Reduces operating costs by more than 90% - includes cost reductions related to acquiring, pumping, heating, treating, and disposing of water.

Performance - proven commercial sterilization with 195 deg F hot water. More effective in micro reduction than ozonated water or chemical sterilization.

Automatic - inserting a knife or power tool activates the sterilization cycle. The sterilizer achieves the same commercial results with all operators.

Safety - the hot water spray is contained within the sterilizer, removing the risk of scalding operators.

Reduces condensation- steam is contained within the sterilizer and not continuously released into the surrounding environment.

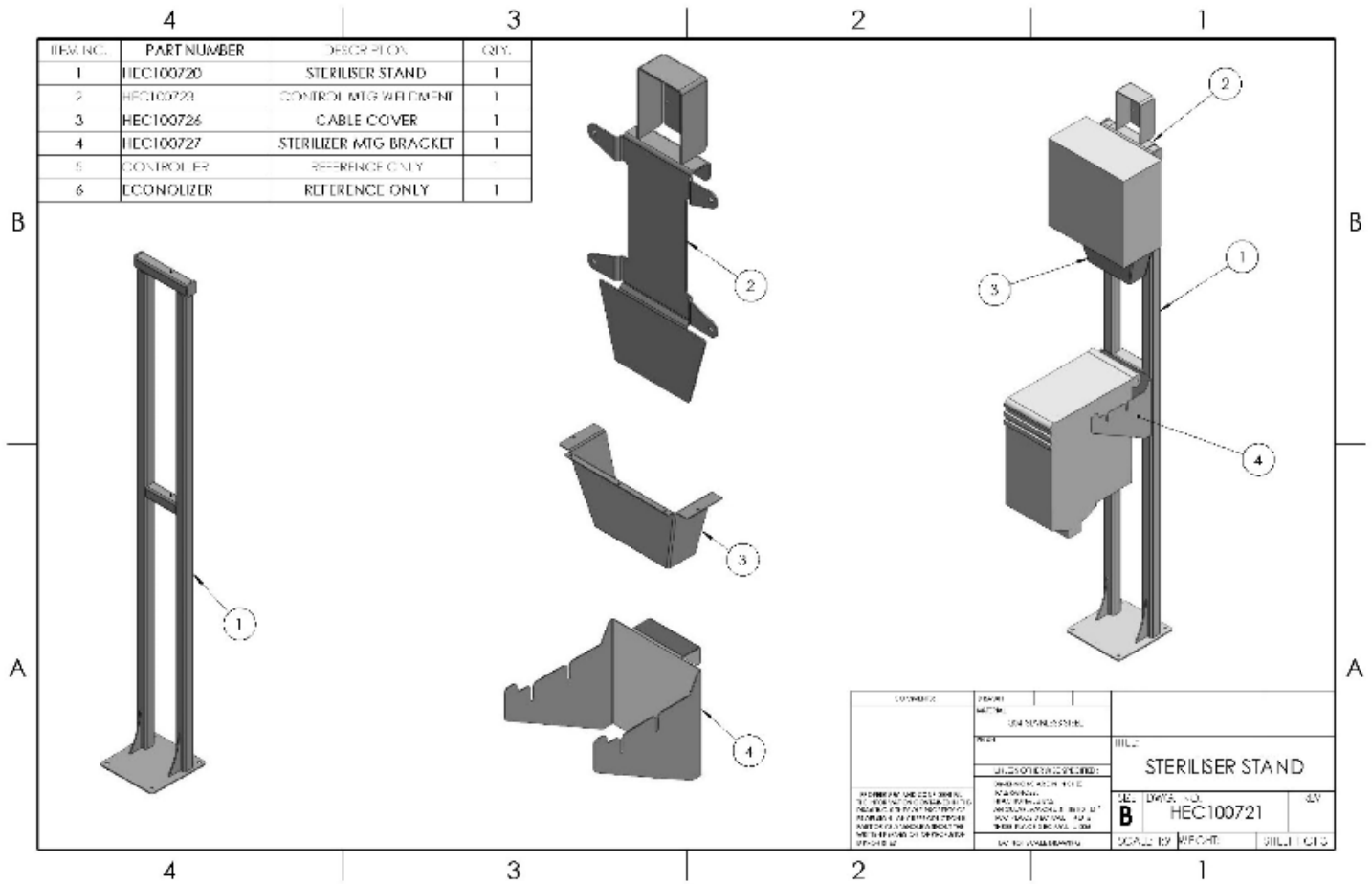
Knives are left cleaner - the time in the sterilization cycle and the pressurized hot water spray results in a cleaner knife or power tool.

Knives do not lose sharpness – hot water spray is momentary, minimizing the annealing effect.



Knife Sterilizer and Controller Assemblies

Knife Sterilizer



Mounting Stand and Brackets (brackets are designed to hang on 1 ½ square tubing)

SPECIFICATIONS

Temperature set point	194 deg F
Sterilization Cycle Time	4.5 sec (adj)
Water consumption – 2 nozzle unit	4.75 oz @ 4.5 sec cycle time
Water consumption – 4 nozzle unit	9.5 oz @ 4.5 sec cycle time

UTILITY REQUIREMENTS

Electrical connection	208/240/277 VAC, single phase, 60 Hz
Max power consumption	2.5 kVA or 2.5 kW
Max current	11 Amps
Water Connection	1/2-inch NPT
Water pressure (minimum)	45 psi
Water flow rate – 2 nozzle unit (minimum) ..	1.0 gal/min
Water flow rate – 4 nozzle unit (minimum) ..	2.0 gal/min
Drain	1 ½ inch OD